

# INSTRUCTION MANUAL

## MLR-454 Motorcycle Lifter - Platform Type 454kg



A349

# 450KG MOTORCYCLE LIFT



## FEATURE:

1. Hydraulic motorcycle lift is operated by one foot pedal to lift and by another foot pedal to release.
2. After lifting, a spindle can be used to control lifting height to prevent unintentional slow lowering.
3. With leading plate, the motorcycle can be easily moved onto the platform.
4. A locking front wheel vise prevents the motorcycle from slipping, tilting over or falling.
5. The motorcycle lift can be anchored to floor with two adjusting screw to prevent it from sliding.
6. The hydraulic motorcycle lift can be moved easily with four wheels.

**A349**

450KG MOTORCYCLE LIFT

***EXTRA INSTRUCTIONS***

ALWAYS USE LIFTER WITH THE REAR 2 LEGS UNDER THE RAMP IN THE EXTENDED POSITION

**NEVER USE THE LIFTER IN THE UP POSITION WITHOUT PUTTING THE SAFETY BAR SUPPLIED THROUGH THE HOLES IN THE BASE IN FRONT OF THE SCISSOR ROLLERS**

ALWAYS HAVE THE MOTORBIKE ON THE CENTRE STAND AND THE FRONT WHEEL CLAMPED SECURELY BEFORE LIFTING THE PLATFORM

# 450KG MOTORCYCLE LIFT



## WARNING

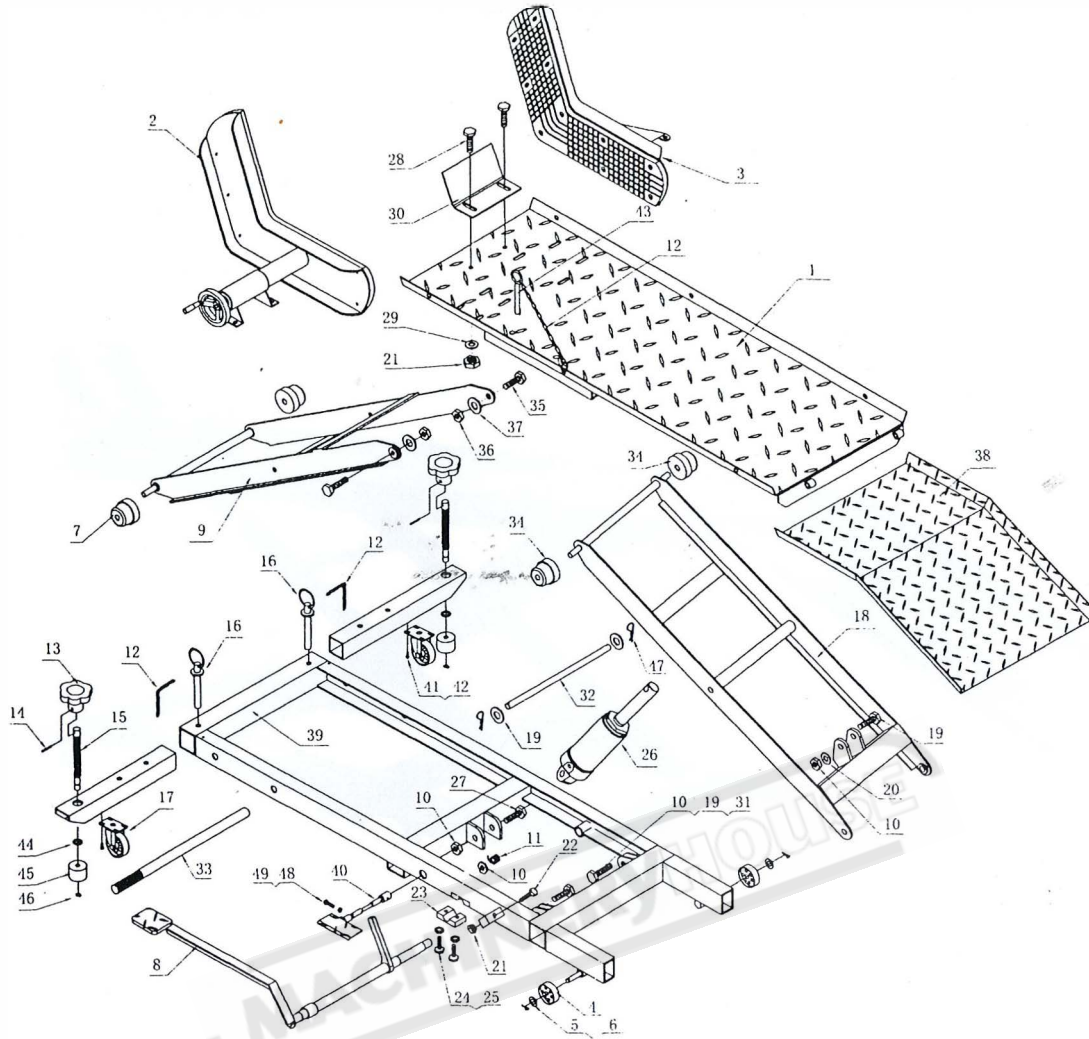
FOR YOUR SAFETY AND TO PREVENT INJURY:

**READ ALL INSTRUCTIONS BEFORE USING THIS TOOL!**

### CAUTIONS:

- ▲ Before operation, be sure to fix the motorcycle lift on floor with adjusting screws to prevent the lift from silding during operation.
- ▲ After plaing the motorcycle onto the platform, be sure to use the Vise to lock front wheel of the motorcycle to prevent it from slipping, tilting over, or falling.
- ▲ After lifting, be sure to insert set spindle into front lifting arm to prevent from unintentional slow lowering.
- ▲ **Keep work area clean.** Cluttered areas invite injuries.
- ▲ **Observe work area conditons.** Do not work in damp or wet locations. Don't expose to rain. Keep work area well lighted.
- ▲ **Keep children away.** Children must never be allowed in the work area. Do not let them handle machines, tools or extension cords.
- ▲ **Do not overload it's rated capacity.**Overloading can cause damage to or failure of the motorcycle lift and may result in personal injury
- ▲ **Store idle equipment.** When not in use, tools must be stored in a dry location to inhibit rust. Always lock up tools and keep out of reach of children.
- ▲ **Use eye and ear protection.** Always wear ANSI approved impact safety goggles.
- ▲ **Do not overreach.** Keep proper footing and balance at all times. Do not reach over or across electrical cables or frames.
- ▲ **Use the right tool for the job.** Do not use a tool for a purpose for which it was not intended.
- ▲ **Dress properly.** Do not wear loose clothing or jewelry, as they can be caught in moving parts. Non-skid footwear is recommended. Wear restrictive hair covering to contain long hair. Always wear appropriate work clothing.
- ▲ **Stay alert.** Watch what you are doing, use common sense. Do not operate any tool when you are tired.
- ▲ **Check for damaged parts.** Before using any tool, any part that appears damaged should be caretully checked to determine that it will operate properly and perform its intended function. Check for alignment and binding of moving parts; any broken parts or mounting fixtures; and any other condition that may effect proper operation. Any part that is damaged should be properly repaired or replaced by a qualified technician.
- ▲ **Maintenance.** If is recommended that an annual inspection of the tool be made and that any defective parts, decals, or warning labels be replaced with manufacturer's specified parts.

# 450KG MOTORCYCLE LIFT



Ref #	DESCRIPTION	QTY	Ref #	DESCRIPTION	QTY	Ref #	DESCRIPTION	QTY
1	Platform	1	18	Rear Lifting Arm	1	35	Hex BOlt M12x45	2
2	Movable Vise	1	19	Flat Washer Ø16	4	36	Hex Nut M12	2
3	Fixing Vise	1	20	Hex Bolt M16x18	1	37	Flat WasherØ12	2
4	Wheel	2	21	Hex Nut M10	12	38	Leading Plate	1
5	Flat Washer Ø12	2	22	HexBolt M10x40	1	39	Base Frame	1
6	Split Ring	2	23	Axle Bush	1	40	Release Valve	1
7	Chain Wheel	2	24	Hex Bolt M8x20	2	41	Hex Bolt M6x16	8
8	Foot Pedal	1	25	Lock Washer Ø8	2	42	Lock WasherØ6	8
9	Front Lifting Arm	1	26	Hydraulic Ram	1	43	Rabletop Lock Pin	1
10	Nut M16	5	27	Hex Bolt M16x85	1	44	Flat WasherØ8	2
11	Spring	1	28	Hex Bolt M10x30	10	45	Set Base	2
12	Chain	3	29	Flat Washer Ø10	10	46	Snap Ring	2
13	Handwheel	2	30	Fender	1	47	"R" Pin	2
14	Spring Pin	2	31	Hex BOlt M16x40	2	48	Nut M6	8
15	Screw	2	32	Middle Shaft	1	49	Hex BOlt M8x20	2
16	Lock Pin	2	33	Safety Handle	1	50	Nut M8	2
17	2"Swivel Caster	2	34	Upper Wheel	2			